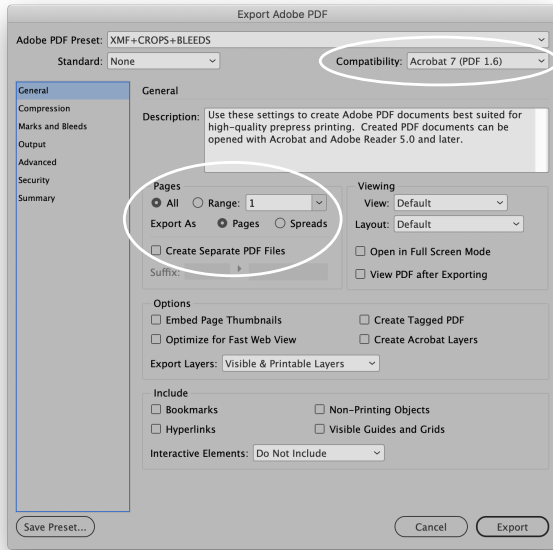
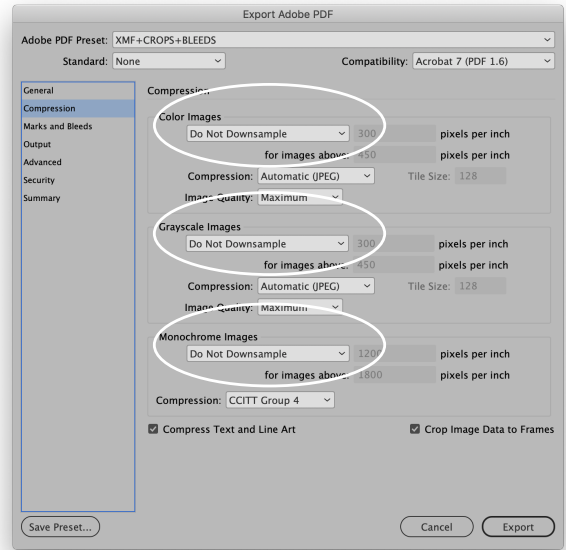


Please export all PDFs from InDesign using these settings.

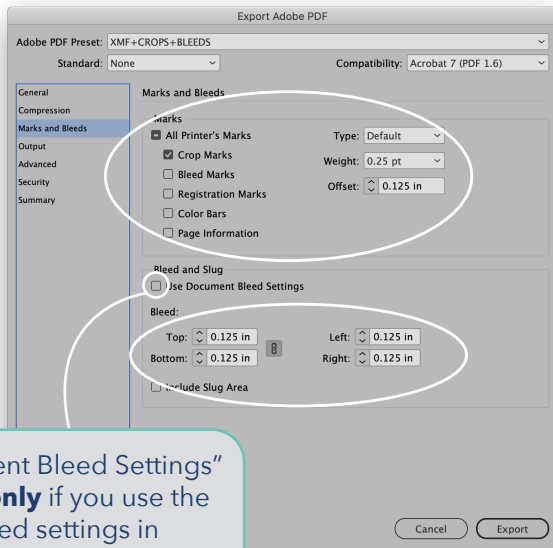
1



2

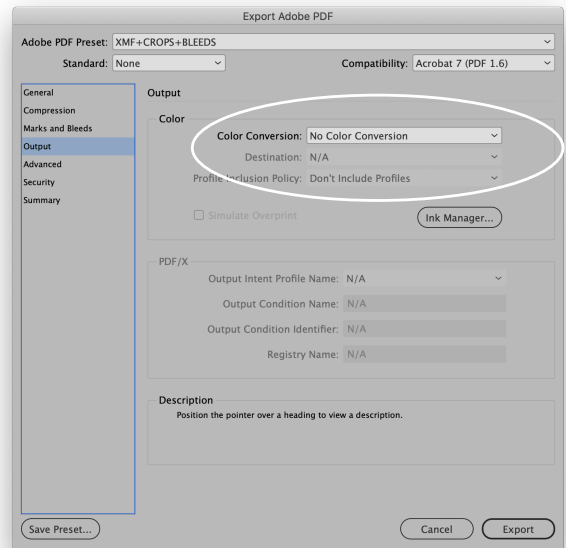


3



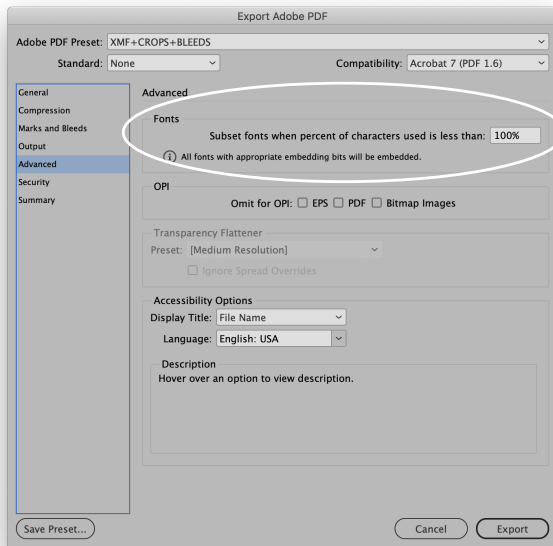
"Document Bleed Settings" works **only** if you use the bleed settings in "Document Setup"

4



Screen shots taken from Adobe InDesign CC2020

5



Do not add passwords or other security features to your PDFs, as this can prevent us from printing or editing your art.

Do not add color bars, targets or another printers marks other than crop marks.

Extend all artwork or photos that reach the page edge .125" beyond the finished trim size to allow for proper bleeds.

Bleed = .125"  
or .25" for Large Format  
Page Edge  
Margin = .125"

